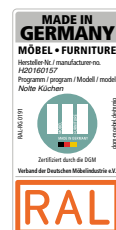


# INNOVATIONS 2022





For the third time in succession:  
Germany's favourite kitchen brand.



We produce in Germany – also officially certified by the Verband Deutsche Möbelindustrie Deutschland e.V., the association of the German furniture industry.



The golden M guarantees proven quality, safety and healthy home living.



Added to this, and particularly against the backdrop of current events, we take the responsibility we share for our environment and the future of coming generations very seriously. This makes us especially proud to hold two further certifications in this context!



**Management**  
Marc Hogrebe  
Melanie Thomann-Bopp  
Eckhard Wefing

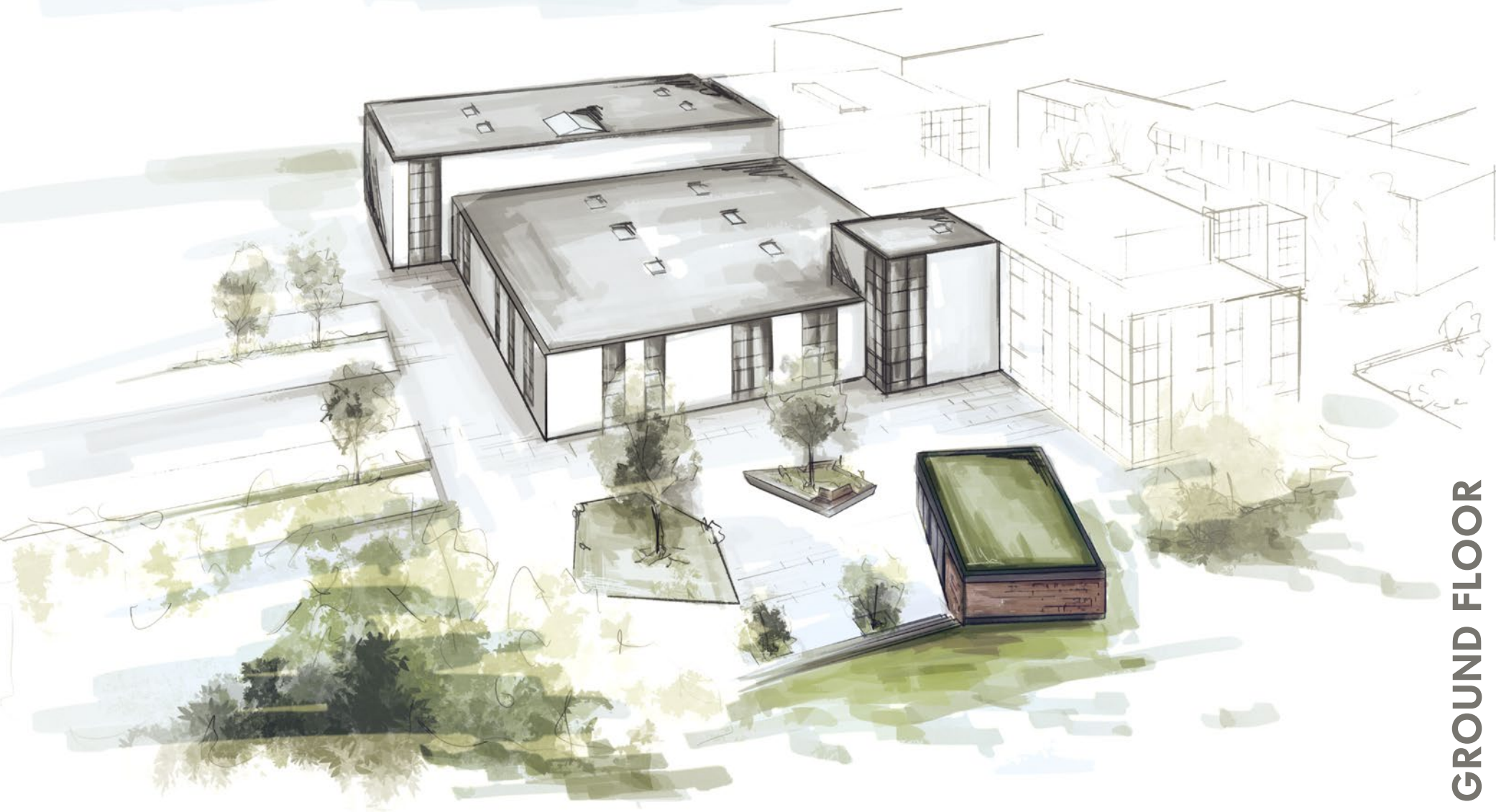
This year we are presenting a real project of future importance from Nolte Küchen. In completely new dimensions, you can now experience all aspects of living in the kitchen and beyond: opening the NOLTE FORUM, we have expanded our previous information and exhibition centre by 3,800 m<sup>2</sup> to a total area of over 7,000 m<sup>2</sup>.

Bringing out the innovations for 2022, we have focused on one thing above all else: you and your customers! Taking forward our key themes of recent years and introducing a few genuine highlights for straightforward, fast and, above all, successful kitchen sales.

**Look forward to our innovations for 2022 – in a new dimension!**



# NEW DIMENSIONS



More inspiration, more impressions, more options, more designs – this is what you can expect from our new NOLTE FORUM in Löhne.

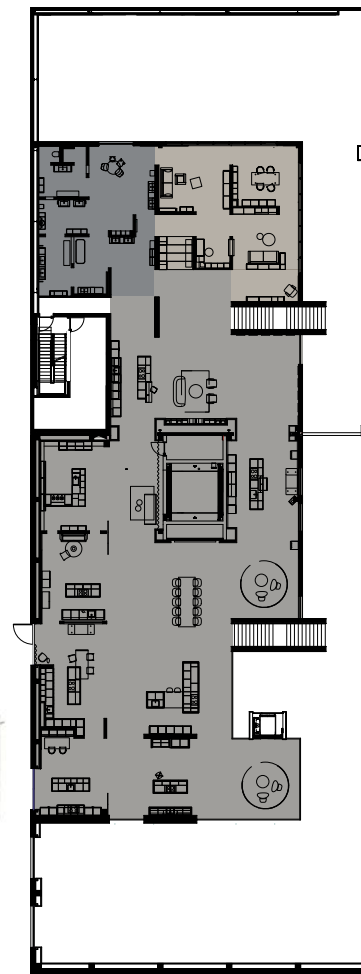
The special part: we not only show you our product line-up, but guide you in a structured way through the most diverse of theme-based worlds – from kitchens for every living situation to country house or tiny home, with particular demands on planning, to a fully furnished apartment.

The Competence Centre, for example, conveys the many different furnishing and interior organisation options while other areas provide a whole new perspective on interior design. And with Nolte LIVING and Nolte SPA, we can also give you ideas and suggestions that go far beyond the kitchen.

Yet the NOLTE FORUM is also a place of communication and of meeting up – not only are you and your customers welcome during the exhibition, but after it's over too.

This is where you will find the whole world of Nolte at just one venue!

TOP FLOOR



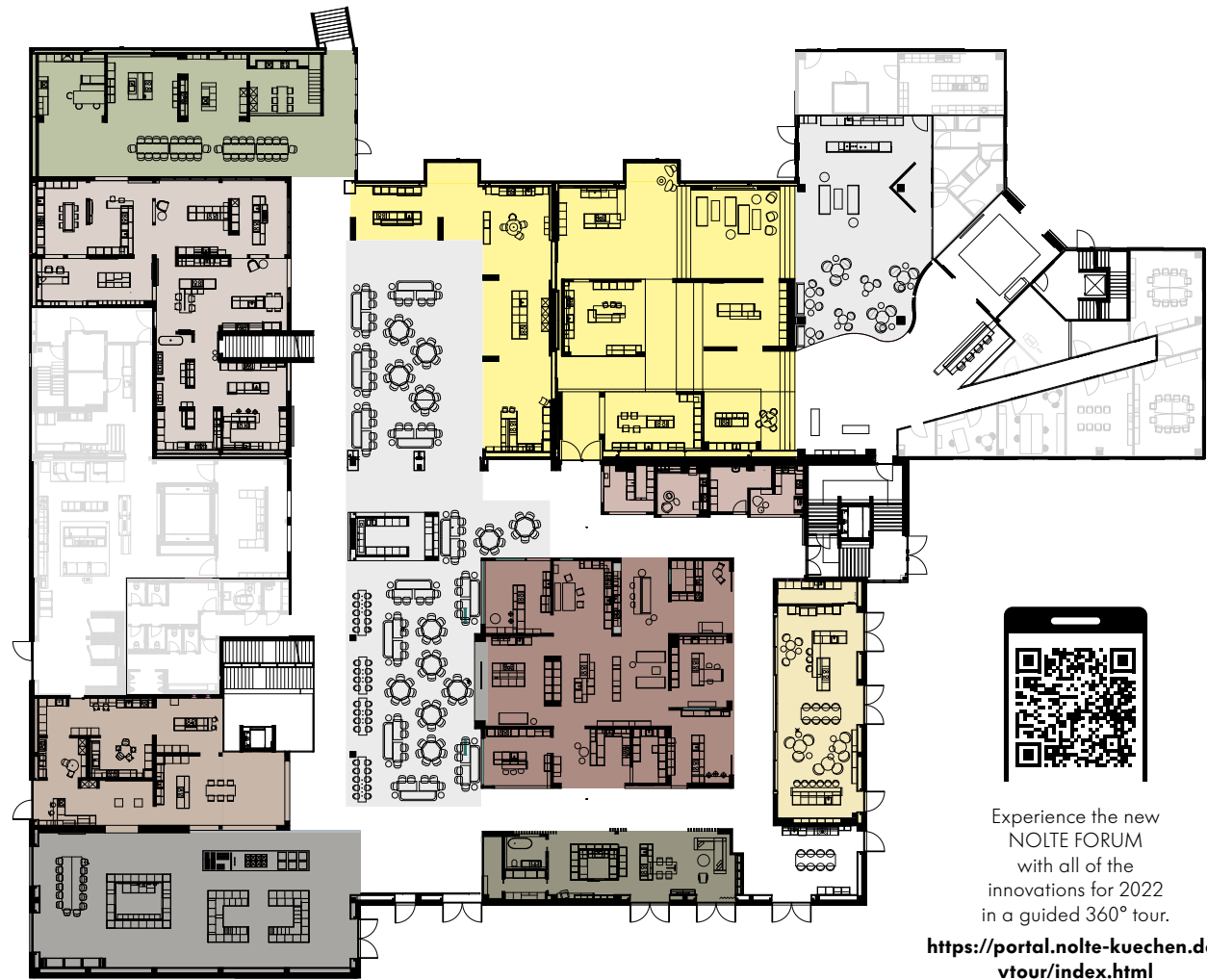
TOP FLOOR

- NOLTE SPA 
- NOLTE LIVING
- NOLTE NEO 

GROUND FLOOR

- INNOVATIONS
- COUNTRY HOUSE
- STUDIO
- BASIC
- APARTMENT
- CUBE
- TINY
- COMPETENCE CENTRE
- "THE GEORGE"

GROUND FLOOR



Experience the new NOLTE FORUM with all of the innovations for 2022 in a guided 360° tour.  
<https://portal.nolte-kuechen.de/vtour/index.html>



This is how the new NOLTE FORUM was born – from the initial excavation works to the point of completion.  
<https://vimeo.com/588719845>



*Black in its  
homliest form.*



**MANHATTAN OAK NERO**

MANHATTAN 48N - Oak nero • Carcase GTD - Graphite  
Worktop U23 - Black PRO • Handle combination 851 - Black



## *A trend* **becomes a classic.**

The new MANHATTAN oak nero creates a well-balanced combination of inviting homeliness and timeless elegance with its expressive surface texture which, depending on the incidence of light, changes from deep black to soft grey.

Open shelf units and display cabinets with integrated lighting down the sides open up the otherwise somewhat understated kitchen and artistically set the scene wherever it appears.



Black electrical appliances, display cabinets with black anodised aluminium frames and black tinted glass, a black worktop and a black sink with matching mixer tap give this kitchen a particularly elegant aura.

The attention to detail becomes apparent on taking a look inside the units: the new display cabinets have no visible hinges, lifting their extremely homely feel.





*When purism shows  
true format.*

**MANHATTAN OAK NERO**

MANHATTAN 48N - Oak nero • Carcase GTD - Graphite  
Worktop Z13 - Cement agate grey • Handleless MatrixArt 591 - Black







## *A little* **can achieve a lot.**

Amazing design can be as reduced as this. The compelling texture of MANHATTAN oak nero just asks to be reduced to the essentials. A real statement – and in price group 1 at that!

The worktop in cement agate grey makes an elegant frame for the island, leaving the MatrixArt illuminated vertical finger pulls to steal the show. The new interior organisation regime in black with elements in genuine oak keeps everything perfectly ordered and provides an antibacterial surface on top.



Interior organisation in black laminate / genuine oak



Cutlery perfectly organised with knife block and chopping board



Cutlery organisation with film/foil dispenser



Storage set for pull-outs and interior pull-outs



*Modern, elegant, versatile –*  
**in short: graphite.**



**PLUS GRAPHITE SOFT MAT**

PLUS 60G - Graphite • Carcase GTD Graphite • Worktop U51 - Graphite PRO  
Handle combination 851 - Black • Splashback and open shelving ED6 - Oak graphite silver

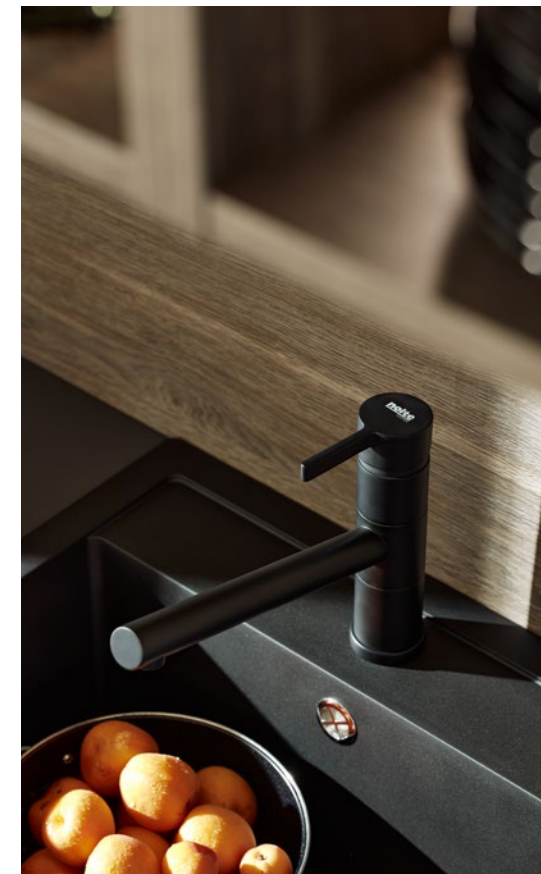




## *A stylish* **combination.**

This kitchen is the perfect example of how well the latest trends complement last year's to paint a picture of perfect harmony:

PLUS in graphite with anti-fingerprint surface reflects the current trend of dark tones and muted colours. Oak graphite silver from last year's collection is the perfect complement and makes statements with a homely feel.



The user soon realises where the kitchen's from, from its fittings, say. After all, they all carry the Nolte Küchen label. This year, we are extending the whole line-up.

Graphite ideally complements our palette of grey tones, going perfectly between quartz grey and black. As you've come to expect from Nolte Küchen: graphite is available across many material systems and price groups – from MANHATTAN in price group 1 to NOVA LACK in price group 6. Particularly easy to look after is our PLUS in laminate with anti-fingerprint finish as shown here.





*Natural beauty*  
**meets brilliant design.**



**NOVA LACK HIGH-GLOSS GRAPHITE**

NOVA LACK 73H - Graphite high-gloss • LEGNO 59C - Oak champagne • Carcase GTD Graphite • Worktop U51 - Graphite PRO  
Handleless MatrixArt 591 - Black (NOVA LACK) • Handle combination 854 - Stainless steel look (LEGNO)





## *Birds of a feather flock together.*

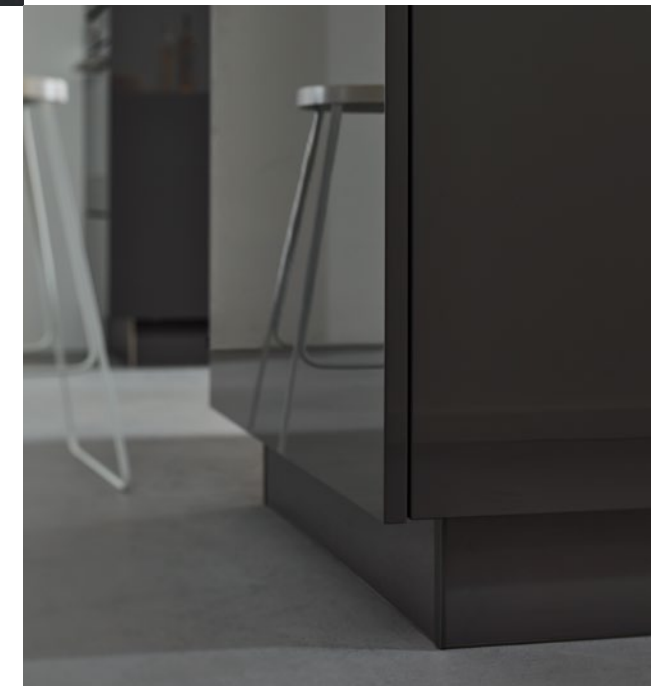
This composition works wonderfully well by combining high-quality materials: NOVA LACK in graphite high-gloss harmonises perfectly with LEGNO and other elements in genuine oak champagne. The new wall units in a height of 1,350 mm conjure a spacious look with ample storage.



The larger-unit carousel shelves, which are also new, provide optimum access to storage space.



Minor detail, major effect: from now on, you can position plinths at equal distances from the front and sides of islands and base units. This can be done using the dedicated sets (see page 56).





Perfectly  
coordinated.

**FLAIR WHITE SOFT MAT**

FLAIR 937 - White soft mat with volcano oak edge • MANHATTAN 489 - Volcano oak • Carcase PWD - Premium white PRO • Volcanic oak  
Worktop U22 - Premium white PRO • 100 mm Counter element E39 - Volcano oak Handle combination 855 - Volcano oak





## *This is where everything goes together.*

A sense of harmony always pervades wherever colours and patterns create a whole – and are reflected in different parts of the kitchen. As here: where MANHATTAN volcanic oak meets the statement edge from FLAIR, perfectly colour-matched to create a look of delightful harmony. Almost invisible from the outside, it only really becomes apparent when the doors and pull-outs are opened. Also in volcanic oak, the handles complement the look of this kitchen with absolute perfection.

One further good example of how last year's new successful releases – in this case MANHATTAN volcanic oak – can be combined with the latest new products.



Harmony in perfection: the coordinated fronts and handles give this kitchen that certain something.





# Country house in a new guise.

## PORTO WHITE SOFT MAT

PORTO 811 - White soft mat • Carcase PWD - Premium white • Worktop M20 - Marble white  
Handle 209 - Stainless steel look Cornice profile KP9 PWD - Premium white





# Classics re-interpreted.

Introducing PORTO, we are giving our country-house fronts another facet – in the truest sense of the word.

Alongside FOCUS from the last collection, PORTO is the somewhat more stylish front from the country-kitchen entry-level range. Coming in white or platinum grey, it is available in the same colours.



Elegant glass cabinet doors with glass panels that pick up on the style of the front, as well as matching cornice profiles add to the design options.



The new cornice profile (KP9) not only goes perfectly with PORTO but with FOCUS too.

A light pelmet (LB9) to complement them is also available.







# COLLECTION 2022



# Fronts 2022

MANHATTAN oak nero brings a new finish to the kitchen that's right on trend. And all from price group 1!

Graphite ideally complements quartz grey and black, while the FLAIR makes statements with the designer edge in volcanic oak.



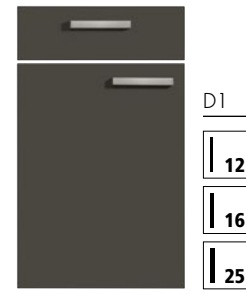
PG1 | M20 **MANHATTAN UNI**  
Melamine resin mat



**48N** Oak nero

Surrounding elements:  
**ENE** Oak nero  
(visible sides, open shelf units, plinths, claddings / filler panels, ceiling panels)

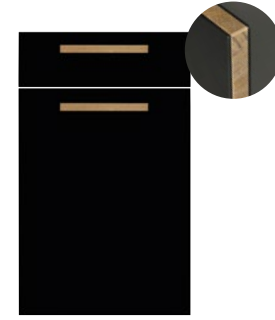
PG1 | M15 **MANHATTAN**  
Melamine resin mat



**48G** Graphite

Surrounding elements:  
**GTD** Graphite  
(Carcase, open shelf units, plinths, claddings / filler panels, gallery shelves, ceiling panels, KP2/LB2)

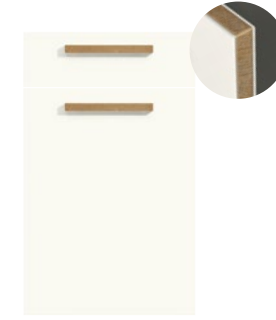
PG4 | F27 **FLAIR**  
Laminate, mat  
with anti-fingerprint finish



Black soft mat

Edging:  
**957** Volcanic oak / black

PG4 | F27 **FLAIR**  
Laminate, mat  
with anti-fingerprint finish



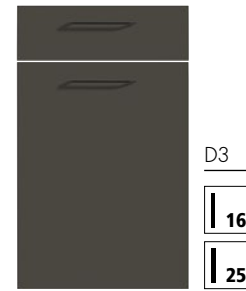
White soft mat

Edgings:  
**937** Volcanic oak / white  
**935** Stainless steel look  
**936** Brass look



The volcanic oak edge on FLAIR makes lovely statements.

PG3 | P14 **PLUS**  
Mat laminate  
with anti-fingerprint finish



**60G** Graphite

Surrounding elements:  
**SAG** Laminate with anti-fingerprint finish

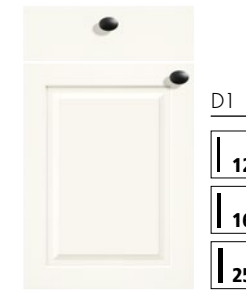
PG3 | P15 **PORTO**  
3D lacquered laminate mat



**81P** Platinum grey soft mat

Surrounding elements:  
**PGD** Platinum grey  
(Carcase, open shelf units, plinths, claddings / filler panels, gallery shelves, ceiling panels, KP9/LB9)

PG3 | P15 **PORTO**  
3D lacquered laminate mat



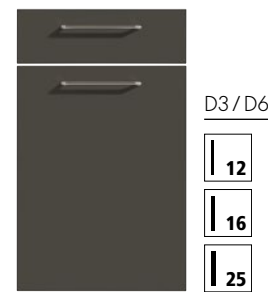
**811** White soft mat

Surrounding elements:  
**PWD** Premium white  
(Carcase, open shelf units, plinths, claddings / filler panels, gallery shelves, ceiling panels, KP9/LB9)



A bevelled glass display cabinet door cleverly picks up on PORTO's style.  
**KFG** Bevelled plain glass

PG6 | N12 **NOVA LACK**  
High-gloss genuine lacquer



**73H** High-gloss graphite

Surrounding elements:  
D6 **LGH** Gloss graphite lacquer  
(Visible sides, open shelf units, plinths, claddings / filler panels, gallery shelves, ceiling panels, KP2/LB2)  
D3 **LLH** Gloss graphite lacquer

Harmonises perfectly with all fronts in graphite and also makes the perfect combination for many colours and timber finishes.

Carcase: **Graphite GTD**

PG4 | S19 **SOFT LACK**  
Genuine lacquer soft mat



**767** Graphite soft mat

Surrounding element  
**LM7** Lacquer graphite soft mat  
(Carcase, open shelf units, plinths, claddings / filler panels, gallery shelves, ceiling panels, KP2/LB2)

PG6 | T24 **TORINO LACK**  
Genuine lacquer soft mat



**C37** Graphite soft mat

Surrounding element  
**LM7** Lacquer graphite soft mat  
(Carcase, open shelf units, plinths, claddings / filler panels, gallery shelves, ceiling panels, KP7/LB7)

PG6 | F30 **FRAME LACK**  
Genuine lacquer soft mat



**A37** Graphite soft mat

Surrounding element  
**LM7** Lacquer graphite soft mat  
(Carcase, open shelf units, plinths, claddings / filler panels, gallery shelves, ceiling panels, KP2/LB2, KP5/LB5)

PG6 | W10 **WINDSOR LACK**  
Genuine lacquer soft mat



**727** Graphite soft mat

Surrounding element  
**LM7** Lacquer graphite soft mat  
(Carcase, open shelf units, plinths, claddings / filler panels, gallery shelves, ceiling panels, KP2/LB2, KP5/LB5)



# Handles and handle combinations

## KNOB 143



Black, metal

## HANDLE 9IA



Black, metal  
◊ ◊ 160 mm

## HANDLE 354



Stainless steel look, metal  
◊ ◊ 160 mm

## HANDLE 9JB



Stainless steel look, metal  
◊ ◊ 160 mm

## HANDLE 9KB



Black, metal  
◊ ◊ 192 mm

## HANDLE 9LB



Titanium look, metal  
◊ ◊ 192 mm

## HANDLE 9MB



Volcanic oak, wood  
◊ ◊ 192 mm

Next year too, you'll once again be ideally positioned to handle everything when it comes adding highlights to the kitchens you plan. The new handles and handle combinations give you just the right solution for every front and every kitchen.

And adding the new wooden option in volcanic oak, our range now features a handle that goes perfectly with FLAIR.



## HANDLE COMBINATION 851



Black, metal  
◊ ◊ 160/320 mm

<b>Front width</b>	◊ ◊
200 – 400 mm	160 mm
450 – 1200 mm	320 mm

## HANDLE COMBINATION 852



Black, metal  
◊ ◊ 96/192/320 mm

<b>Front width</b>	◊ ◊
150 – 200 mm	96 mm
300 – 500 mm	192 mm
600 – 1200 mm	320 mm

## HANDLE COMBINATION 853



Titanium look, metal  
◊ ◊ 96/192/320 mm

<b>Front width</b>	◊ ◊
150 – 200 mm	96 mm
300 – 500 mm	192 mm
600 – 1200 mm	320 mm

## HANDLE COMBINATION 854



Stainless steel look, metal  
◊ ◊ 64/160/320 mm

<b>Front width</b>	◊ ◊
150 – 200 mm	64 mm
300 – 500 mm	160 mm
600 – 1200 mm	320 mm

## HANDLE COMBINATION 855



Volcanic oak, wood  
◊ ◊ 96/192/320 mm

<b>Front width</b>	◊ ◊
150 – 200 mm	96 mm
300 – 500 mm	192 mm
600 – 1200 mm	320 mm

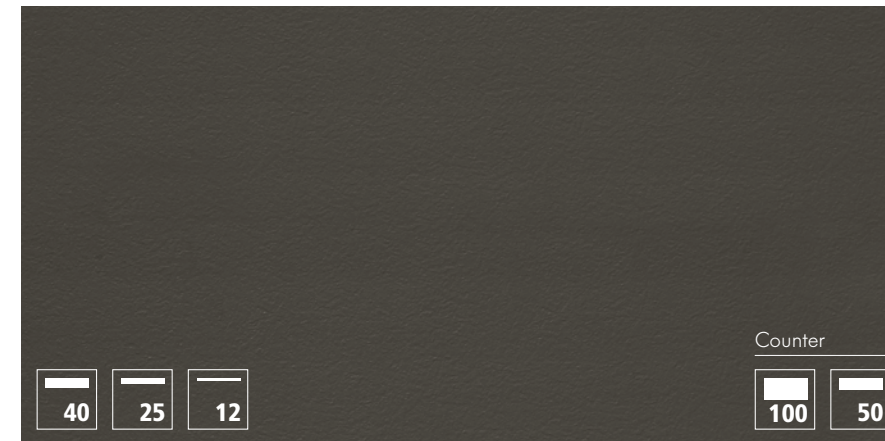


# Worktops

It's not until the worktop's just right that the perfect kitchen's complete. This is why we're once again giving you yet more planning options with three new worktop decors.



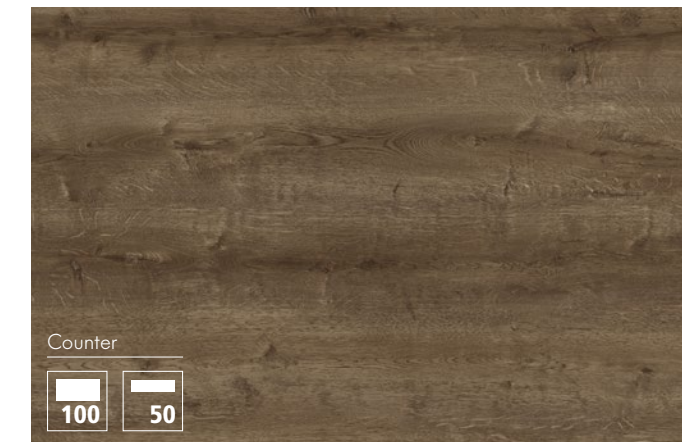
Oak barriqué and terra mare in 50 and 100 mm thickness now embellish the segment of countertop elements.



**U51** Graphite PRO



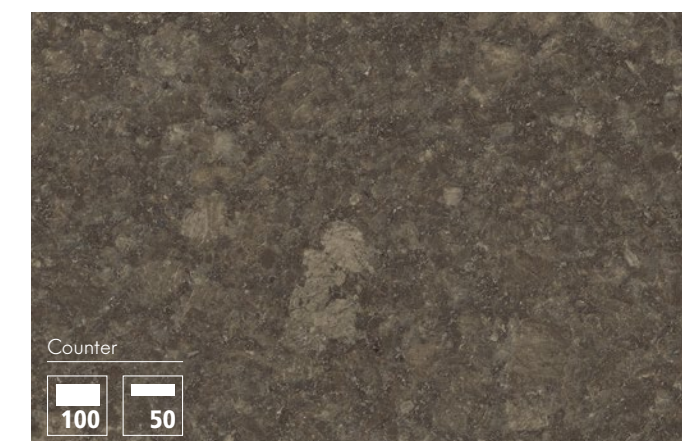
**E40** Castell oak



**E35** Oak barriqué



**C33** Terra nova



**C31** Terra mare

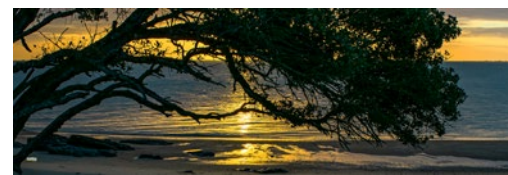


# Splashbacks

We have significantly extended the range of digitally printed splashbacks and now give you even more options for designing kitchens with a bespoke look. Choose from different themes and motifs to suit any preference your customer may have.



**M31** Country house



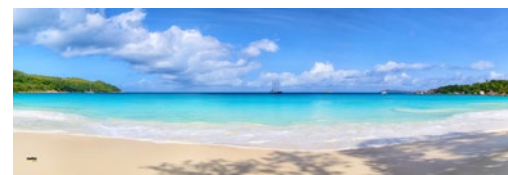
**M49** Sunrise island



**M45** Skyline new york



**M42** Beach path



**M30** Seychelles



**M43** Switzerland



**M41** Forest panorama



**M35** Taste of wine

Glass splashback panelling with motif  
Width 600 – 1800 mm, for 40/25/12 mm worktop

**NVGM - 56/57/59 - NKL**

Glass splashback panelling with motif, illuminated  
Width 900/1000/1200/1800 mm, for 40/25/12 mm worktops

**NVGM - 56/57/59 - LED - NKL**

Splashback panelling with motif, direct laminate facing  
Width 600 – 2800 mm, for 40/25/12 mm worktops

**NVDM - 56/57/59**



**M47** Sunset city



**M48** Nature landscape



**M46** Mountain scenery



**M40** Beach dunes



**M32** Tuscany



**M38** Reed stalks



**M34** Mortar with herbs



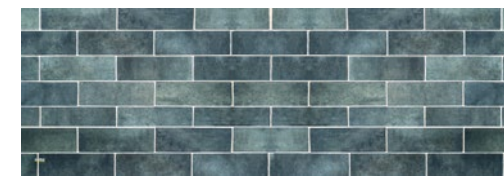
**M36** Herbs and blooms



**M33** Skyline by night



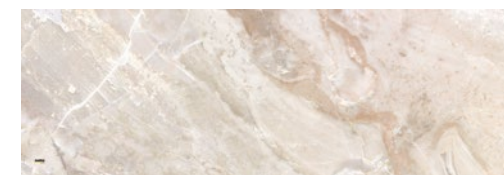
**M37** Green cactus



**M22** Ceramic tile blue



**M24** Brick Wall



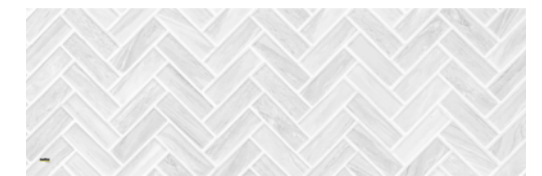
**M26** Marble beige



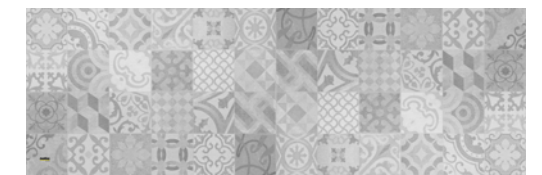
**M44** Eiffel tower



**M20** Marble tile gray



**M21** Marble tile white



**M23** Mosaic tiles gray



**M27** Patchwork style





# NOLTE LIVING



# More than kitchens.

Increasingly, the kitchen is opening up on living space, boundaries are merging, an open-plan eat-in kitchen as the focal point of the home is now right on trend. This makes it all the more important to design the crossover in the same colours and decors as you use in the kitchen.

Now, nothing could be easier with Nolte LIVING.

And best of all: Matrix150 leaves all furniture in exactly the same dimensions as you choose for the kitchen. Instantly conjuring a picture of lovely harmony, all on its own.







### FLOOR-STANDING CABINETRY

Our line-up either lets you design floor-standing solutions ...



### WALL-MOUNTED CABINETRY

... or, by way of alternative, ones off the floor too. The choice is yours!

# Plan to your heart's content.

You can always choose from the entire Nolte Küchen product range to plan individually tailored solutions for the living area. The line-up is being extended to include special-purpose furniture which, for example, can also be wall-mounted.

As inspiration for your planning activities, we have put together various examples you can easily select with your planning system (Carat, Winner, etc.) using an article number.

Needless to say, these are only suggestions for an almost endless number of possible options you can modify in any chosen way.

Starting on page 10.03 in the 2022 Product Guide you'll find an exact type reference along with further planning examples.

Planning example 1

WSET 01



floor-standing cabinetry with pull-out units, wall units and open shelf units, dimension 3000 mm

Planning example 2

WSET 02



wall-mounted cabinetry with pull-out units, wall units and open shelf units, dimension 4200 mm

Planning example 3

WSET 03



wall-mounted cabinetry with pull-out units, wall units and CUBE open shelf units, dimension 3600 mm

Planning example 4

WSET 04



wall-mounted cabinetry with base units, pull-out units and wall units, dimension 3000 mm

Planning example 5

WSET 05



wall-mounted cabinetry with base units, pull-out units and wall units, dimension 2800 mm

Planning example 6

WSET 06



wall-mounted cabinetry with pull-out units, wall units and open shelf units, dimension 2700 mm

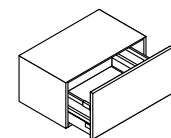


# Base units

## Nolte LIVING

Make the most of the vast range of available options when planning with Nolte LIVING: besides the entire Nolte Küchen product range, you can choose from the following wall-mounted base units.

### Height 300 mm

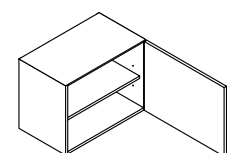


#### PULL-OUT UNIT

wall-mounted  
1 pull-out

Carcase depth 460 mm  
**UAK 30/40/45/50/60/80/90/100/120 - 30 - 50 - W**  
Carcase depth 350 mm  
**UAK 30/40/45/50/60/80/90/100/120 - 30 - 39 - W**

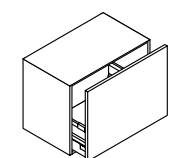
### Height 450 mm



#### BASE UNIT

wall-mounted  
1 door, 1 loose shelf

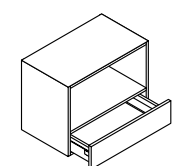
Carcase depth 460 mm  
**UDD 30/40/45/50/60 - 45 - 50 - W**  
Carcase depth 350 mm  
**UDD 30/40/45/50/60 - 45 - 39 - W**



#### PULL-OUT UNIT

wall-mounted  
1 pull-out

Carcase depth 460 mm  
**UAK 30/40/45/50/60/80/90/100/120 - 45 - 50 - W**  
Carcase depth 350 mm  
**UAK 30/40/45/50/60/80/90/100/120 - 45 - 39 - W**

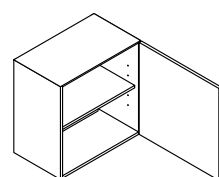


#### BASE UNIT

wall-mounted  
1 open compartment, 1 drawer

Carcase depth 460 mm  
**USO 30/40/45/50/60 - 45 - 50 - W**  
Carcase depth 350 mm  
**USO 30/40/45/50/60 - 45 - 39 - W**

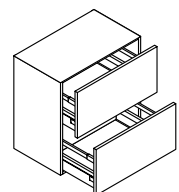
### Height 600 mm



#### BASE UNIT

wall-mounted  
1 door, 1 loose shelf

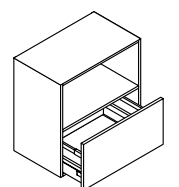
Carcase depth 460 mm  
**UDD 30/40/45/50/60 - 60 - 50 - W**  
Carcase depth 350 mm  
**UDD 30/40/45/50/60 - 60 - 39 - W**



#### PULL-OUT UNIT

wall-mounted  
2 pull-outs

Carcase depth 460 mm  
**UAZ 30/40/45/50/60/80/90/100/120 - 60 - 50 - W**  
Carcase depth 350 mm  
**UAZ 30/40/45/50/60/80/90/100/120 - 60 - 39 - W**



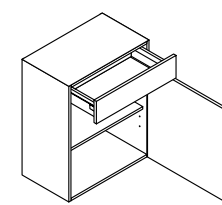
#### PULL-OUT UNIT

wall-mounted  
1 open compartment, 1 drawer

Carcase depth 460 mm  
**UAO 30/40/45/50/60 - 60 - 50 - W**  
Carcase depth 350 mm  
**UAO 30/40/45/50/60 - 60 - 39 - W**



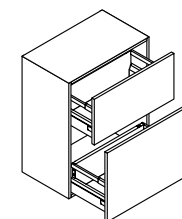
### Height 750 mm



#### BASE UNIT

wall-mounted  
1 drawer, 1 door, 1 loose shelf

Carcase depth 350 mm  
**U 30/40/45/50/60 - 75 - 39 - W**

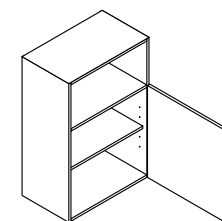


#### PULL-OUT UNIT

wall-mounted  
2 pull-outs

Carcase depth 350 mm  
**U 30/40/45/50/60 - 75 - 39 - W**

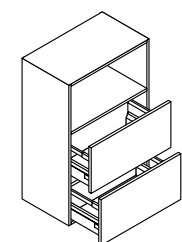
### Height 900 mm



#### BASE UNIT

wall-mounted  
1 open compartment, 1 door, 1 loose shelf

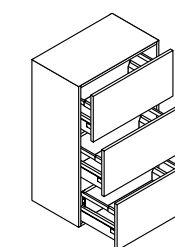
Carcase depth 350 mm  
**U 30/40/45/50/60 - 90 - 39 - W**



#### PULL-OUT UNIT

wall-mounted  
1 open compartment, 2 pull-outs

Carcase depth 350 mm  
**UAZO 30/40/45/50/60 - 90 - 39 - W**



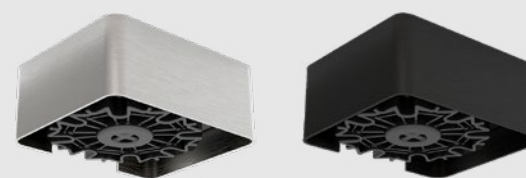
#### PULL-OUT UNIT

wall-mounted  
3 pull-outs

Carcase depth 350 mm  
**UAZ 30/40/45/50/60 - 90 - 39 - W**



### Accessories



#### PLINTH FOOT SOF - S40

Alternative to plinth panel  
Height 40 mm, adjustment range +15 mm / -0

Stainless steel look    black  
**4ES**                      **4SW**



#### CABLE ENTRY KDL

Die-cast zinc, with cover catch  
Height 21 mm, outer diameter 67 mm, cut-out dimension 60 mm

Stainless steel look    black  
**RA2**                      **RA1**



# Tall units

## Nolte LIVING

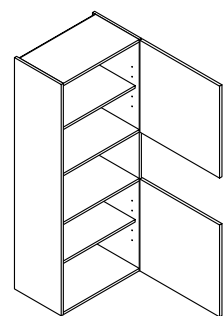
Nolte LIVING tall units not only cut a great figure in the living room. They can also be used anywhere you choose in the dining area or kitchen.

# MATRIXART

by nolte KÜCHEN

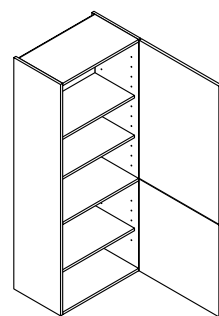
Needless to say, Nolte LIVING lets you create all sorts of compositions too without any handles at all: like the floating base unit, wall units and tall unit illustrated below.

### Height 1500 mm



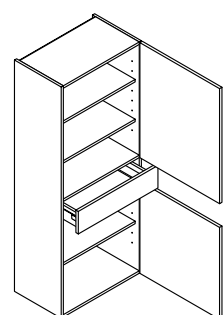
#### TALL UNIT

wall-mounted  
2 doors, 2 loose shelves, 1 open compartment  
Carcase depth 350 mm  
**VTO 30/40/45/50/60 - 150 - 39 - W**



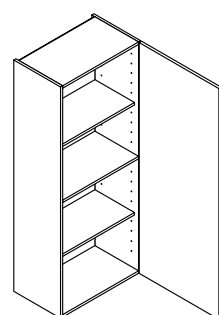
#### TALL UNIT

wall-mounted  
2 doors, 1 fixed shelf, 3 loose shelves  
Carcase depth 350 mm  
**VT 30/40/45/50/60 - 150 - 39 - W**



#### TALL UNIT

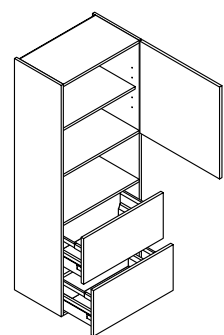
wall-mounted  
2 doors, 3 loose shelves, 1 drawer  
Carcase depth 350 mm  
**VT 30/40/45/50/60 - 150 - 39 - W**



#### TALL UNIT

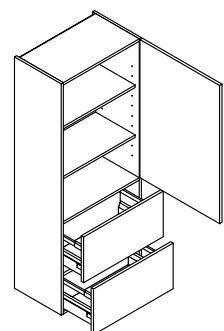
wall-mounted  
1 uninterrupted door, 1 fixed shelf, 2 loose shelves  
Carcase depth 350 mm  
**VDD 30/40/45/50/60 - 150 - 39 - W**

Available in these ranges:  
ARTWOOD, PLUS, SOFT LACK, PORTLAND,  
FERRO, TAVOLA, NOVA LACK, LEGNO



#### TALL UNIT

wall-mounted  
1 door, 1 loose shelf, 1 open compartment, 2 pull-outs  
Carcase depth 350 mm  
**U 30/40/45/50/60 - 150 - 39 - W**

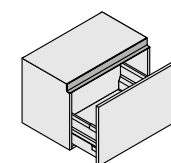


#### TALL UNIT

wall-mounted  
1 door, 2 loose shelves, 2 pull-outs  
Carcase depth 350 mm  
**U 30/40/45/50/60 - 150 - 39 - W**



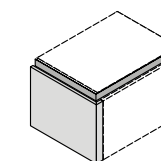
### Height 420 mm



#### PULL-OUT UNIT

wall-mounted  
1 pull-out  
Carcase depth 460 mm  
**UAZ 30/40/45/50/60/80/90/100/120 - 42 - 50 - W**

Carcase depth 350 mm  
**UAZ 30/40/45/50/60/80/90/100/120 - 42 - 39 - W**

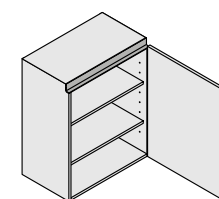


#### SIDE CLADDING FOR WALL CONNECTION

In front finish throughout  
Carcase depth can be varied from 366 - 475 mm or fixed at 475 mm  
**YSFUD 42 - 50**

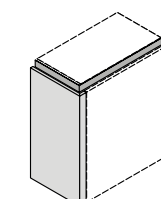
Carcase depth can be varied from 350 - 365 mm or fixed at 365 mm  
**YSFUD 42 - 39**

### Height 750 mm



#### BASE UNIT

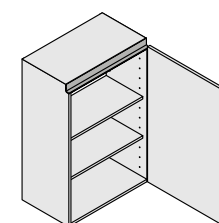
wall-mounted  
1 door, 2 loose shelves  
Carcase depth 350 mm  
**YUDD 30/40/45/50/60 - 75 - 39 - W**



#### SIDE CLADDING FOR WALL CONNECTION

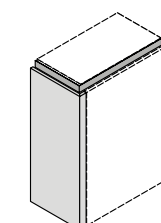
In front finish throughout  
Carcase depth can be varied from 350 - 365 mm or fixed at 365 mm  
**YSFUD 75 - 39**

### Height 900 mm



#### BASE UNIT

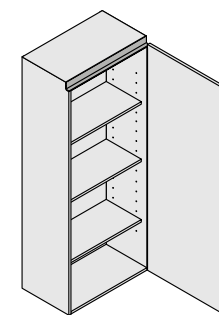
wall-mounted  
1 door, 2 loose shelves  
Carcase depth 350 mm  
**YUDD 30/40/45/50/60 - 90 - 39 - W**



#### SIDE CLADDING FOR WALL CONNECTION

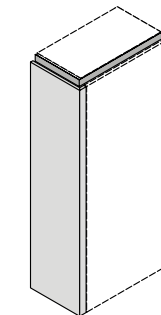
In front finish throughout  
Carcase depth can be varied from 350 - 365 mm or fixed at 365 mm  
**YSFUD 90 - 39**

### Height 1500 mm



#### BASE UNIT

wall-mounted  
1 door, 3 loose shelves  
Carcase depth 350 mm  
**YV 30/40/45/50/60 - 150 - 39 - W**



#### SIDE CLADDING FOR WALL CONNECTION

In front finish throughout  
Carcase depth can be varied from 350 - 365 mm or fixed at 365 mm  
**YSFUD 150 - 39**





# CABINETS 2022



# Glass display cabinets with concealed hinges

Our new glass cabinets with slender aluminium frames are a particular upgrade for any kitchen. As shown here, they always cut a stunning figure when lit from inside. And with concealed hinges at top and bottom panels, nothing spoils the look when this delightful unit opens up to reveal its content.

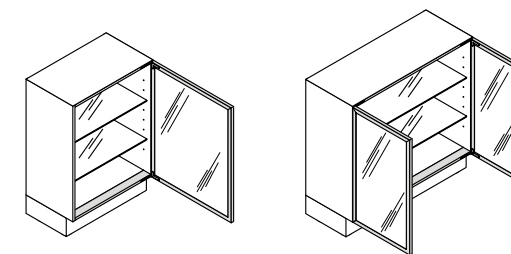
## AVAILABLE TYPES:

Stainless steel look, with plain glass  
Anodised mat black with black tinted glass

**KAG**  
**SGG**



## Base units with glass door DR

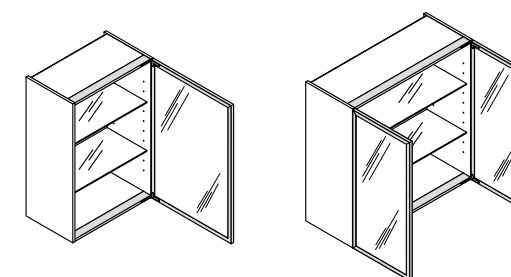


1 glass door / 2 glass doors with aluminium frame and handle profile all round  
2 adjustable glass shelves

Carcase height 750 mm / carcase depth 350 mm  
**UDDDR 40/45/50/60/80/90/100/120 - 75 - 39**

Carcase height 900 mm / carcase depth 350 mm  
**UDDDR 40/45/50/60/80/90/100/120 - 90 - 39**

## Wall units with glass door DR



1 glass door / 2 glass doors with aluminium frame and handle profile all round  
2 adjustable glass shelves

Carcase height 600 mm  
**HVDR 40/45/50/60/80/90/100/120 - 60**

Carcase height 750 mm  
**HVDR 40/45/50/60/80/90/100/120 - 60**

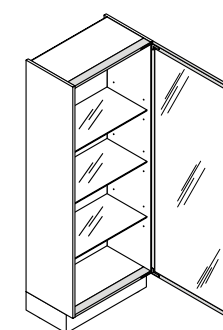
Carcase height 900 mm  
**HVDR 40/45/50/60/80/90/100/120 - 60**

Carcase height 1050 mm  
**HVDR 40/45/50/60 - 60**

Carcase height 1200 mm  
**HVDR 40/45/50/60 - 60**

Carcase height 1350 mm  
**HVDR 40/45/50/60 - 60**

## Tall unit with glass door DR



1 glass door with aluminium frame and handle profile all round  
3 adjustable glass shelves

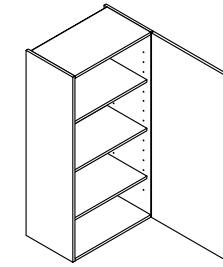
	Carcase depth 350 mm	carcase depth 560 mm
Carcase height 1050 mm	<b>VDR 40/45/50/60 - 105 - 39</b>	<b>VDR 40/45/50/60 - 105</b>
Carcase height 1350 mm	<b>VDR 40/45/50/60 - 135 - 39</b>	<b>VDR 40/45/50/60 - 135</b>
Carcase height 1500 mm	<b>VDR 40/45/50/60 - 150 - 39</b>	<b>VDR 40/45/50/60 - 150</b>
Carcase height 1950 mm	<b>VDR 40/45/50/60 - 195 - 39</b>	<b>VDR 40/45/50/60 - 195</b>
Carcase height 2100 mm	<b>VDR 40/45/50/60 - 210 - 39</b>	<b>VDR 40/45/50/60 - 210</b>
Carcase height 2250 mm	<b>VDR 40/45/50/60 - 225 - 39</b>	<b>VDR 40/45/50/60 - 225</b>



# Greater planning flexibility

Creating an even more spacious look in the kitchen, you can now also incorporate wall units in heights of 1,200 and 1,350 mm for yet more storage.

## Wall units Height 1200 und 1350 mm



### WALL UNIT

1 door, 3 loose shelves  
Carcase depth 350 mm

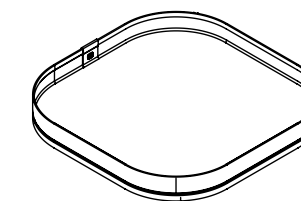
Height 1200 mm  
MatrixArt

Height 1350 mm  
MatrixArt

**H 30/40/45/50/60 - 120**  
**YH 30/40/45/50/60 - 120**

**H 30/40/45/50/60 - 135**  
**YH 30/40/45/50/60 - 135**

## Accessories

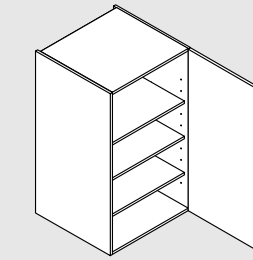


### LARDER UNIT - CAROUSEL TRAY

for units in 600 mm width  
DB 60

## EXTENDED RANGE OF WALL UNITS:

### Wall units, height 1050 mm

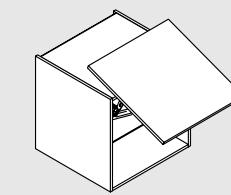


### WALL UNIT

1 door, 3 loose shelves  
Carcase depth 560 mm

Height 1050 mm  
**H 30/40/45/50/60 - 105 - 56**

### Pivoting flap door unit



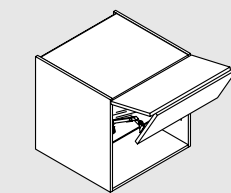
### WALL UNIT

1 pivoting flap door, 1 loose glass shelf  
Carcase depth 560 mm

Height 600 mm  
**HL 45/50/60/80/90/100/120 - 60 - 56**

Height 750 mm  
**HL 45/50/60/80/90/100 - 75 - 56**

### Folding flap door units



### WALL UNIT

1 folding flap door, 1 loose glass shelf  
Carcase depth 560 mm

Height 600 mm  
**HFK 45/50/60/80/90/100/120 - 60 - 56**

Height 750 mm  
**HFK 45/50/60/80/90/100/120 - 75 - 56**

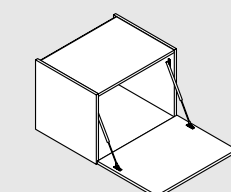
### WALL UNIT

1 folding flap door, 1 loose glass shelf  
Carcase depth 350 mm

Height 600 mm  
MatrixArt **YHFK 30/40 - 60**

Height 750 mm  
MatrixArt **YHFK 30/40 - 75**

### Bar flap door unit



### WALL UNIT

1 bar flap door  
Carcase depth 460 mm

Height 300 mm  
**HBF 60/80/90/100/120 - 30 - 46**

Height 450 mm  
**HBF 60/80/90/100/120 - 45 - 46**

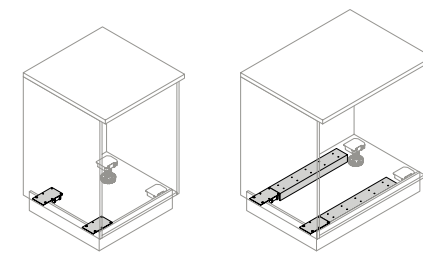


# Even more creative design options

From now on, you can position plinths at equal distances from the front and sides of islands and base units. Just a few centimetres make so much difference to the overall look.

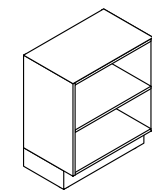
The whole line-up is complemented by even more black-finished accessories and all sorts of other products.

## Assembly set for plinth panel moved in at the side

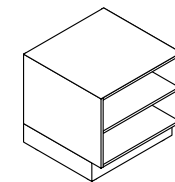


Unit width 300 – 600 mm  
**SES - SET**  
Unit width 800 – 1200 mm  
**SES - SET 80/90/100/120**

## Open shelf base units, height 300, 450 and 600 mm

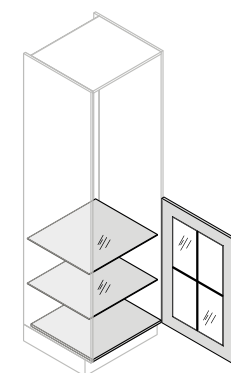


Carcase depth 370 mm  
Carcase height 300 mm **UR 30/40/45/50/60 - 30 - 39**  
Carcase height 450 mm **UR 30/40/45/50/60 - 45 - 39**  
Carcase height 600 mm **UR 30/40/45/50/60 - 60 - 39**



Carcase depth 580 mm  
Carcase height 300 mm **UR 30/40/45/50/60 - 30**  
Carcase height 450 mm **UR 30/40/45/50/60 - 45**  
Carcase height 600 mm **UR 30/40/45/50/60 - 60**

## Additional modular units



### GLASS DOOR WITH GLAZING BARS

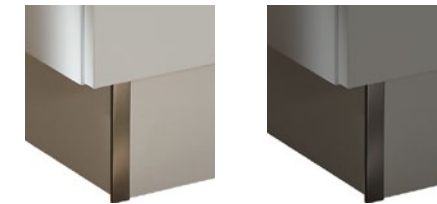
for modular units  
available for ELEGANCE and WINDSOR LACK

Height 600 mm **MTVSP 40/45/50/60 - 60**  
Height 750 mm **MTVSP 40/45/50/60 - 75**  
Height 900 mm **MTVSP 40/45/50/60 - 90**

With many accessories, you now have the choice between stainless steel look and black.

New this year are the plinth corners, the end-panel shoe and the ventilation grille.

## Plinth corners



Stainless steel look **ESO** Black **SWZ**

## Plinth shoe for down-to-floor panels



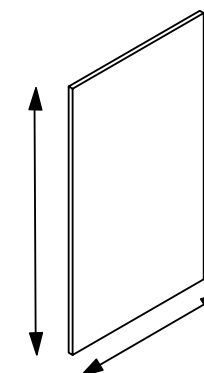
Stainless steel look **ESO** Black **SWZ**

## Ventilation grille



Black  
**LG 500 - S**

## Customised front dimensions



### VARIABLE FRONT

without drill holes and fittings  
**FT 120 - VAR**





# Designing with light

Not only is lighting so important in kitchen design but in the living area too – and here in particular. For 2022, we are offering you further options in the form of flexible plinth lighting and wall-unit recess lighting.

## LED ambient lighting



for mounting on the cabinet base panel  
can be shortened every 25 mm, including retaining profile and 2000 mm connection cable

Length 2200 mm **LED - BAND - 220**  
Length 3350 mm **LED - BAND - 335**

## LED lighting



built into the wall recess  
behind wall units and shelves

**LED - ERS - 30/40/45/50/60/89/90/100/120**

# Re-organised

The new interior organisation system not only looks good, it comes with other attractive features for your sales pitch on top: besides the antibacterial surface, it includes elements in high-quality real wood, such as a chopping board that simply vanishes into the drawer, or storage jars for the pull-out.

## Interior organisation

### CUTLERY ORGANISATION

Black plastic with antibacterial surface  
for drawers and internal drawers  
Carcase depth 560 mm

**BEI 1 K 30/40/45/50/60/80/90/100/120**



### FOIL/FILM DISPENSER

Real oak / metal

**BEI 1 K - FOL**



### KNIFE HOLDER

Real oak

**BEI 1 K - MES**



### CHOPPING BOARD

Real oak, oiled  
can be positioned on the cutlery tray

**BEI 1 K - SB**



### INTERIOR ORGANISATION, STORAGE SET

Black plastic with antibacterial surface  
for pull-outs and interior pull-outs from a carcase width of 450 mm  
Carcase depth 560 mm

3 dividing elements in real oak  
**AOR 1 K 45 - 3T**

1 dividing element in real oak, 3 storage jars  
**AOR 1 K 45 - 3VG**

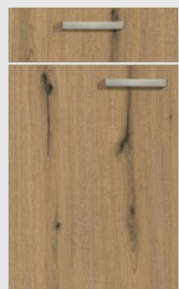




The new releases for 2021 will give you all manner of support for your sales pitch. From on-trendy fronts and decors to clever details that stand out from the crowd. For all their appeal, the new line-up is one thing for sure: easy to sell!

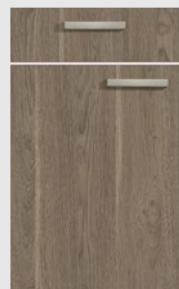
## Fronts

PG1



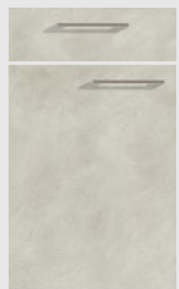
**MANHATTAN**  
Volcanic oak, melamine resin mat

PG1



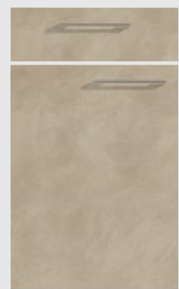
**MANHATTAN**  
Oak graphite silver, melamine resin mat

PG1



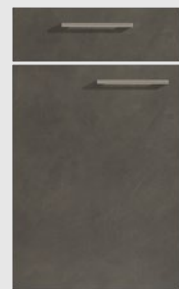
**LUCCA**  
Cement sapphire grey, melamine resin mat

PG1



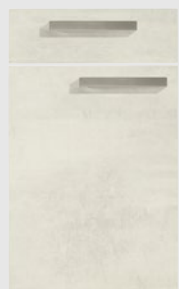
**LUCCA**  
Cement agate grey, melamine resin mat

PG1



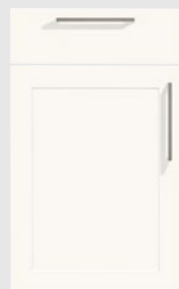
**LUCCA**  
Cement anthracite, melamine resin mat

PG2



**STONE**  
Concrete white, melamine resin mat

PG3



**FOCUS**  
White soft mat, 3D lacquered laminate

PG3



**FOCUS**  
Platinum grey soft mat, 3D lacquered laminate

## Worktops and surrounding elements



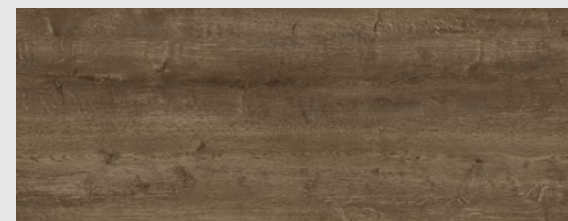
Beech heartwood



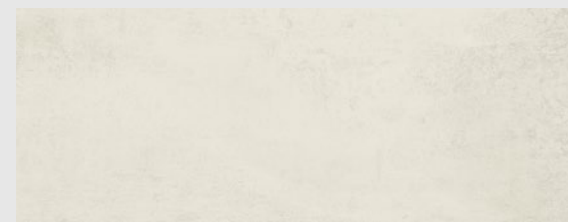
Volcanic oak



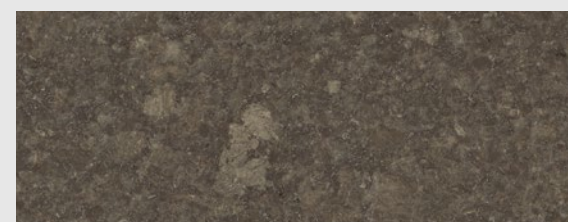
Oak graphite silver



Oak barriqué



White concrete



Terra mare



### Perfect throughout

Uninterrupted doors on tall units and appliance housings perfect the look of kitchens planned in a modern style.



### Symbiosis of storage space and design

Our new wall unit height of 105 cm not only gives you new options in kitchen design, wall units in a height of 120 and 135 cm are unbeatable too when it comes to storage space.

### The crowning glory for MatrixArt

You can also illuminate the vertical MatrixArt recessed handle profile and create a further highlight in handleless kitchens.





# Highlights 2022

Needless to say, you can expect expressive fronts and decors for 2022 too. Our new collection also features a host of other highlights, not only making the kitchen even more interesting, even more homely and even more practical. This is where you will find everything you need for some healthy sales!



## Black in its homliest form

MANHATTAN oak nero creates a well-balanced combination of inviting homeliness and timeless elegance.

And impressively demonstrates that even a front from price group 1 can be used to give that quality edge.



## Nolte LIVING

With immediate effect, you can design your customer's home from one and the same block: from kitchen to utility room and now, all new, with Nolte LIVING for the living room and dining area too.

This gives you Nolte Küchen's entire product range with all sorts of other useful and practical additions.



## Modern, elegant, versatile: graphite

The new Graphite colour shade not only perfectly complements quartz grey and black, it also makes a lovely and valuable addition to the whole of our collection:

Available from price group 1 to price group 6 and in virtually all material systems from melamine resin and laminate to soft mat and high-gloss genuine lacquer, graphite could hardly be more appealing.



## Elegant and homely alike

Glass display cabinets conjure a particularly homely elegance, particularly in combination with high-quality materials, such as the black aluminium frame and the lighting integrated in the cabinet.

From now on, it's worth taking a second glimpse inside the cabinet: with hinges concealed at top and bottom panel, there's nothing here anymore to spoil the look.



The kitchen is the room of rooms.  
We probably *live* more,  
and more *intensively*,  
here than anywhere else in the home.  
It is the place where  
we meet, where we encounter others.  
As family or friends.  
As a couple.  
We *cook*, *eat* and *enjoy* ourselves  
in the kitchen. And sometimes we have  
all the time in the world as we do so.  
We argue. And *make up again*.  
We read, write, send emails, post messages.  
And maybe philosophise a little.  
And – quite secretly – the kitchen sets  
the rhythm of our day.  
Good morning. Then midday. Then evening.  
And sometimes night ...  
Which is *why we love* the kitchen.

Living in the kitchen. nolte

VF-NP22-GB

Subject to technical change without notice. Colour shades shown in this catalogue may sometimes vary slightly from original colours for printing and photographic reasons.

Nolte Küchen GmbH & Co. KG | Anni-Nolte-Straße 4 | 32584 Löhne | [www.nolte-kuechen.com](http://www.nolte-kuechen.com)

**nolte**<sup>®</sup>  
KÜCHEN