

Everything organised *in the kitchen.*



A place for *everything.*

MAXIMUM STORAGE SPACE
PERFECTLY ORGANISED

Have you chosen your Nolte kitchen or is it still being planned? Besides an appealing look, high-quality features, generous storage space and carefully considered details, the interior too is so incredibly important. This is where Nolte Küchen has a wide range of products for you, perfectly structuring your drawers and pull-outs. Simply heavenly when there's a place for everything, walking distances in the kitchen are short and work flows are smooth.

**LESS CHAOS?
CAN BE ORGANISED!**

*Organisation is
when you know
where not to look.*





Everything works.

LOGICALLY PLANNED WITH
CLEVER DETAILS

A good plan: think about where you want to do the things you'll be doing in your kitchen. This way you can structure the various function zones and coordinate everything. It's the details that make all the difference: for instance, have you thought about keeping fresh food near the sink and waste bin? This will let you dispose of peelings and scraps quickly and efficiently while preparing food. By the same token, of course, it makes sense to keep everything quickly needed while cooking near the hob.



1

Well-considered organisation: pull-outs provide a clever answer to storing food and keeping tableware. Bins for sorting waste are kept directly under the sink and cooking utensils as well as spices near the hob. This provides the perfect place for everything.



3

TIP: MAKE COOKING MORE RELAXED AND MORE ENJOYABLE

When everything is cleverly organised where it's needed, the cooking's done as if by magic. You'll see: it's a whole new feeling when you don't have to look for anything. Everything you need most frequently should be in direct reach.



2



4

- 1 This is where to keep your provisions well-organised.
- 2 Versatile storage for your various sizes of crockery.
- 3 Sorting waste directly under the sink makes cleaning and waste disposal one seamless work step.
- 4 All cooking utensils for preparing food are in easy reach at the hob.



Practical all-round view: In larger units, provisions can be viewed and accessed from both sides. Pull-outs also provide a better overview of things. The advantage: you instantly see everything from above. Well-structured partitioning provides a place for everything – and lets you put everything back to where it belongs. Neat and tidy organisation in a jiffy!

TIP: KEEP THINGS TOGETHER THAT BELONG TOGETHER

Forgotten anything? This is where it helps to pre-sort. For instance, keep baking utensils together in one box. Or put breakfast items together. This way, everything is quickly put on the table and cleared away again. The bottle basket lets you pre-sort the bottles you serve to guests.

Everything in abundance.

FOR WELL-ORGANISED FOOD STORAGE



- 1 All provisions are systematically organised by variable partitioning.
- 2 The pull-outs even provide a place for bottle crates.
- 3 Practical boxes take everything to the table in one go and quickly clear it away again.



1



2



3



4

+32%

1 A depth partition divides the pull-out into up to five separate sections.

2 Thanks to the Nolte Küchen Matrix 150 grid system drawers are up to 150mm high. This provides enough room to fit even large items, such as a broad soup ladle, into the drawer – without anything getting stuck.

3 Anti-slip-mats provide a better hold for kitchen utensils stored in the pull-out and drawer.

4 Function bases with slot-in cross partitions keep tableware neatly organised.

5 Saucepans can be placed next to each other or stored one on top of the other – lids are also kept where they are easy to find.

+32% MORE STORAGE SPACE

Opening our extra deep pull-outs produces a real 'wow' effect: the 750 mm planning depth gives you an impressive 32% more storage space – with only 150 mm more space needed at the wall.

Everything quickly to hand: bring feel-good organisation to your drawers and pull-outs. Our versatile elements help to keep tableware, cutlery, pots and pans in easy reach. How easy it is to create neat and tidy organisation. It makes sense to keep saucepan lids next to saucepans and cups next to saucers. This instantly makes work flows in the kitchen so much smoother.



5

The right place for everything.

FOR PUTTING ITEMS AWAY QUICKLY AND EASILY





Despite U-bend cut-out, there's still sufficient space under the sink for cleaning products.



Perfect place. Store vegetables in boxes next to the sink and waste sorting bins. Then you can wash them and dispose of vegetable waste straight away.



Everything in easy reach.

FOR EASY, UNINTERRUPTED WORK FLOWS

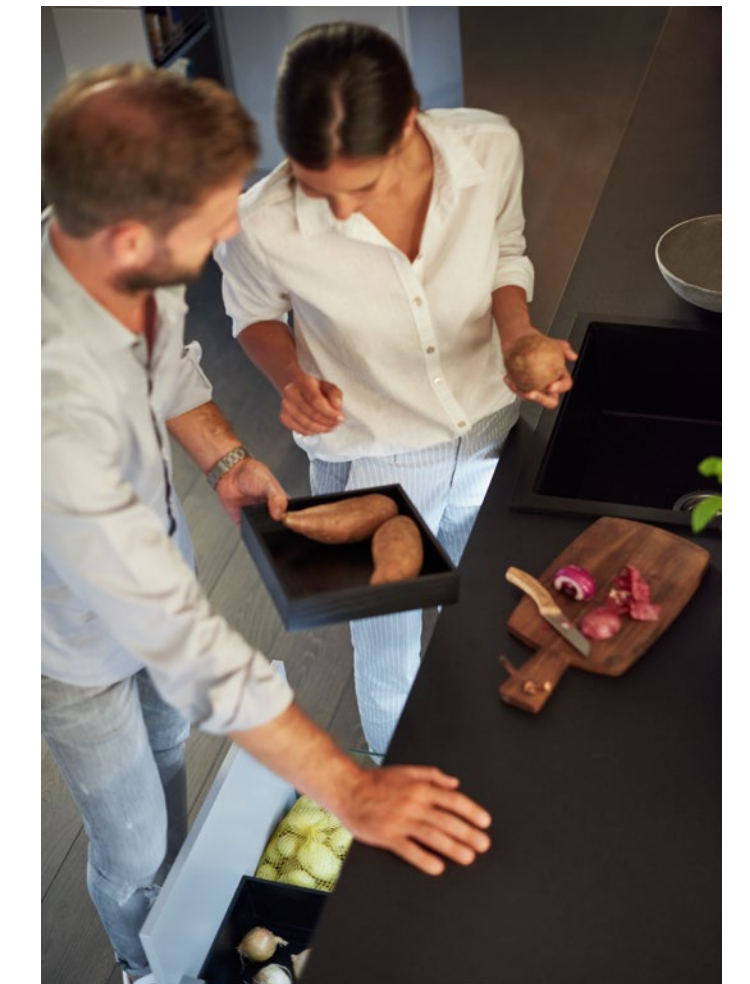
- 1 Foils, films and other practical helpers neatly stored where they are easily found.
- 2 Perfect organisation for spice containers thanks to the spice insert.
- 3 The bottle basket with oils is at arm's reach.

Everything flows smoothly. When cooking, the work flow in preparing food mustn't come to a halt because you suddenly need to look for something important. Ingredients and cooking utensils should always be to hand without having to think where to find them. Clever interior organisers from Nolte Küchen provide fast access and make cooking more pleasurable.



TIP: BEING ABLE TO PUT YOUR HAND ON SPICES AND AND SAUCES STRAIGHT AWAY

Salt, pepper, vinegar, oil, sauces – everyone has ingredients that are constantly need while cooking. Good places for everyday spices and ingredients, for example are kitchen units and drawers to the right and left of the cooker. Kept there, they are quickly to hand and put away again. And you can always keep an eye on your food when you need something.



The right options.

FOR EVERY STYLE AND BUDGET

DESIGN
FOR EVERY TASTE

The choice is yours: Nolte Küchen offers you all sorts of different solutions, from the basic accessories to the options in classy real wood. Define the interior organisation of your drawers and pull-outs in exactly the way you want. You can look forward to versatile interior organisers.



Basic version in PLASTIC



Easy to clean. Cutlery inserts are available for every drawer width, plus practical cross partitions and depth divisions for the pull-outs. (Products from page 20)



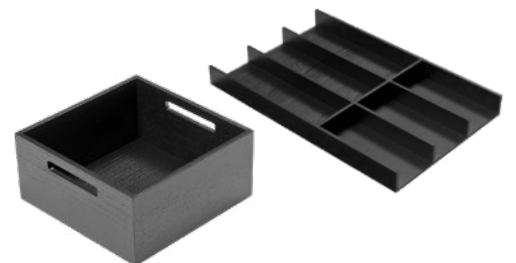
Real OAK



Captivates with a look of natural authenticity. You can look forward to cutlery inserts for every drawer width as well as numerous pull-out accessories. The various elements can be combined in any way you choose. (Products from page 24)



Real ASH, black



Particularly high in quality. You can choose from cutlery inserts for every drawer width, numerous pull-out accessories and a wide selection of customisable elements. (Products from page 30)



The style of your kitchen is continued through on the inside. Whether understated „tone in tone“ or bold eye-catcher with contrasting highlights – you decide how you want your organisation system to look.

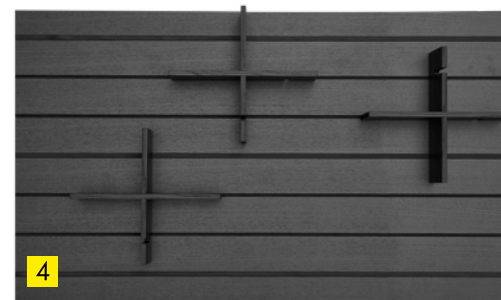
*Everything to meet
whatever you wish.*





Everything in a set.

ALL-INCLUSIVE SETS ...



Do you like it simple and uncomplicated? If you do, then the all-inclusive sets for pull-out units are the right choice for you. This will give you a good basis which you can add to in any way you choose.



... OR INDIVIDUAL DRAWER AND PULL-OUT SETS

Our drawer and pull-out sets give you a selection of the most practical and popular organisers in all materials.

Examples of sets:

- 1 All-inclusive set in real ash black consisting of:
- 2 Drawer at top
- 3 Pull-out in the middle
- 4 Pull-out at the bottom
- 5 Cutlery organiser in real oak / full organisation
- 6 Set 1, drawer in real oak / segmented organisation
- 7 Set 1, drawer in real ash, black / segmented organisation
- 8 Set 3, pull-out in real oak / segmented organisation

You will find a complete product guide from page 20 onwards.



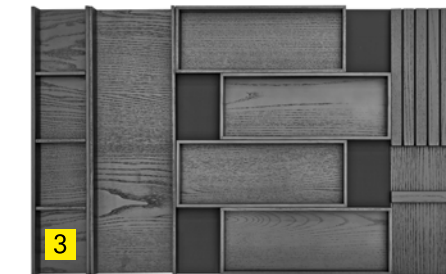


Everything tailored.

PUT TOGETHER TO SUIT YOUR NEEDS

Find everything you need: you can choose from a wide range of individual interior organisation elements to configure your drawers and pull-outs in any way you wish. Put together your interior organisation yourself.

Examples of interior organisers put together to suit individual needs:



- 1 Customised drawer interior organisation
- 2 Anti-slip-mat | sliding insert for small items | spice insert | segmented cutler insert
- 3 Anti-slip-mat | multi-functional insert with partitions | multi-functional insert | 4 x all-purpose tray 1 | knife block
- 4 Anti-slip-mat | kitchen roll holder | spice insert set | spice insert | segmented cutlery insert
- 5 Anti-slip-mat | all-purpose tray 1 | 3 x box 1 | box 2
- 6 Anti-slip-mat | depth division | box 3

You will find a complete product guide from page 20 onwards.



PLASTIC

Basic organisation.

This and the following pages give you an overview of our all-inclusive sets as well as all individual elements from the basic interior organisation system in plastic.

An overview of the all-inclusive sets for all unit widths and finishes as well as pictures and descriptions of all available organisational elements can be found here on the Internet at:



http://download.nolte-kuechen.de/Innenorga_GB

Legend: 900 mm = unit width
Bold = illustration shown

FOR THE COMPLETE UNIT:

All-inclusive set Interior organisation – for base units with 1 drawer and 2 pull-outs | for 560 mm carcass depth



600 mm	BEI-SET 60
800 mm	BEI-SET 80
900 mm	BEI-SET 90
1000 mm	BEI-SET 100
1200 mm	BEI-SET 120

FOR DRAWERS AND INTERIOR DRAWERS:

Cutlery organisation – for 560 mm carcass depth



300 mm	BEI 30
400 mm	BEI 40
450 mm	BEI 45
500 mm	BEI 50
600 mm	BEI 60
800 mm	BEI 80
900 mm	BEI 90
1000 mm	BEI 100
1200 mm	BEI 120

behind a hinged door

400 mm	BEI 40-DR
450 mm	BEI 45-DR
500 mm	BEI 50-DR
600 mm	BEI 60-DR

for 350 mm carcass depth

600 mm	BEI 60-39
800 mm	BEI 80-39
900 mm	BEI 90-39
1000 mm	BEI 100-39
1200 mm	BEI 120-39

for 460 mm carcass depth

300 mm	BEI 30-50
400 mm	BEI 40-50
450 mm	BEI 45-50
500 mm	BEI 50-50
600 mm	BEI 60-50
800 mm	BEI 80-50
900 mm	BEI 90-50
1000 mm	BEI 100-50
1200 mm	BEI 120-50

for 710 mm carcass depth



600 mm	BEI 60-75
800 mm	BEI 80-75
900 mm	BEI 90-75
1000 mm	BEI 100-75
1200 mm	BEI 120-75

Cutlery organisation set – with spice insert | for 560 mm carcass depth



600 mm	BEI 60-GEW
800 mm	BEI 80-GEW
900 mm	BEI 90-GEW
1000 mm	BEI 100-GEW
1200 mm	BEI 120-GEW

Cutlery organisation set – with knife block | for 560 mm carcass depth



600 mm	BEI 60-MES
800 mm	BEI 80-MES
900 mm	BEI 90-MES
1000 mm	BEI 100-MES
1200 mm	BEI 120-MES

Cutlery organisation set – with film/foil dispenser | for 560 mm carcass depth



600 mm	BEI 60-FOL
800 mm	BEI 80-FOL
900 mm	BEI 90-FOL
1000 mm	BEI 100-FOL
1200 mm	BEI 120-FOL

SPICE INSERT, KNIFE BLOCK, KITCHEN ROLL HOLDER:

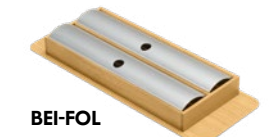
Inserts in real oak | for 560 mm carcass depth



BEI-GEW



BEI-MES



BEI-FOL

FOR PULL-OUTS AND INTERIOR PULL-OUTS:

Cross partition – for all carcass depths



300 mm	AORP 30	800 mm	AORP 80
400 mm	AORP 40	900 mm	AORP 90
450 mm	AORP 45	1000 mm	AORP 100
500 mm	AORP 50	1200 mm	AORP 120
600 mm	AORP 60		

Depth division – for 560 mm and 710 mm carcass depths



carcass depth 560 mm	AORP 60-T
carcass depth 710 mm	AORP 75-T



PLASTIC/REAL WOOD

Premium organisation.

The new interior organisation system not only looks good, it comes with other attractive features on top: besides the antibacterial surface, it includes elements in high-quality real wood, such as a chopping board that simply vanishes into the drawer, or storage jars for the pull-out.

Legend: 900 mm = unit width
Bold = illustration shown

FOR DRAWERS:

Cutlery organisation – for 560 mm carcass depth



- 300 mm BE1K 30
- 400 mm BE1K 40
- 450 mm BE1K 45
- 500 mm BE1K 50
- 600 mm BE1K 60**
- 800 mm BE1K 80
- 900 mm BE1K 90
- 1000 mm BE1K 100
- 1200 mm BE1K 120

kitchen roll holder – for 560 mm carcass depth



BE1K-FOL

Knife block – for 560 mm carcass depth



BE1K-MES

Chopping board – for 560 mm carcass depth



BE1K-SB

Interior organisation, storage set – from a carcass width of 450 mm, for 560 mm carcass depth



3 dividing elements in real oak
AOR1K45-3T



1 dividing element in real oak, 3 storage jars
AOR1K45-3VG





REAL WOOD

Oak – Full organisation.

Needless to say, everything at a glance: take a look and see which all-inclusive sets, sets for drawers and pull-outs as well as individual elements in real oak might be an option for you. Made your choice? Simply submit your order.

An overview of the all-inclusive sets for all unit widths and finishes as well as pictures and descriptions of all available organisational elements can be found here on the Internet at:



http://download.nolte-kuechen.de/Innenorga_GB

Legend: 900 mm = unit width
Bold = illustration shown

FOR THE COMPLETE UNIT:

All-inclusive set Interior organisation – for base units with 1 drawer and 2 pull-outs | for 560 mm carcass depth



- 600 mm BEI2H-SET 60
- 800 mm BEI2H-SET 80
- 900 mm BEI2H-SET 90**
- 1000 mm BEI2H-SET 100
- 1200 mm BEI2H-SET 120

FOR DRAWERS AND INTERIOR DRAWERS:

Cutlery organisation – for 560 mm carcass depth



- 300 mm BEI2H 30
- 400 mm BEI2H 40
- 450 mm BEI2H 45
- 500 mm BEI2H 50
- 600 mm BEI2H 60**
- 800 mm BEI2H 80
- 900 mm BEI2H 90
- 1000 mm BEI2H 100
- 1200 mm BEI2H 120

behind a hinged door

- 400 mm BEI2H 40-DR
- 450 mm BEI2H 45-DR
- 500 mm BEI2H 50-DR
- 600 mm BEI2H 60-DR

for 460 mm carcass depth

- 300 mm BEI2H 30-50
- 400 mm BEI2H 40-50
- 450 mm BEI2H 45-50
- 500 mm BEI2H 50-50
- 600 mm BEI2H 60-50
- 800 mm BEI2H 80-50
- 900 mm BEI2H 90-50
- 1000 mm BEI2H 100-50
- 1200 mm BEI2H 120-50

for 710 mm carcass depth



- 600 mm BEI2H 60-75**
- 800 mm BEI2H 80-75
- 900 mm BEI2H 90-75
- 1000 mm BEI2H 100-75
- 1200 mm BEI2H 120-75

Cutlery organisation set – with spice insert | for 560 mm carcass depth



- 600 mm BEI2H 60-GEW**
- 800 mm BEI2H 80-GEW
- 900 mm BEI2H 90-GEW
- 1000 mm BEI2H 100-GEW
- 1200 mm BEI2H 120-GEW

Cutlery organisation set – with knife block | for 560 mm carcass depth



- 600 mm BEI2H 60-MES**
- 800 mm BEI2H 80-MES
- 900 mm BEI2H 90-MES
- 1000 mm BEI2H 100-MES
- 1200 mm BEI2H 120-MES

Cutlery organisation set – with film/foil dispenser | for 560 mm carcass depth



- 600 mm BEI2H 60-FOL**
- 800 mm BEI2H 80-FOL
- 900 mm BEI2H 90-FOL
- 1000 mm BEI2H 100-FOL
- 1200 mm BEI2H 120-FOL

SPICE INSERT, KNIFE BLOCK, KITCHEN ROLL HOLDER:

Inserts in real oak | for 560 mm carcass depth



BEI2H-GEW



BEI2H-MES



BEI2H-FOL

DEPTH DIVISION:

for pull-outs and interior pull-outs



AOR2H-LEI*

BOXES AND CROSS PARTITION:

for pull-outs and interior pull-outs | cross partition for all boxes



AOR2H-BOX 1



AOR2H-BOX 2*



AOR2H-BOX 3



AOR2H-KRZ

* For 560 mm carcass depth



FOR DRAWERS AND INTERIOR DRAWERS:

Set 1 | for 560 mm carcass depth



- 400 mm BEI2H 40-S
- 450 mm BEI2H 45-S**
- 500 mm BEI2H 50-S
- 600 mm BEI2H 60-S

Hinter einer Drehtür:

- 450 mm BEI2H 45-DR-S
- 500 mm BEI2H 50-DR-S
- 600 mm BEI2H 60-DR-S



- 800 mm BEI2H 80-S
- 900 mm BEI2H 90-S**
- 1000 mm BEI2H 100-S
- 1200 mm BEI2H 120-S

FOR PULL-OUTS AND INTERIOR PULL-OUTS:

Set 2 | for 560 mm carcass depth



- 450 mm AOR2H 45-S**
- 500 mm AOR2H 50-S



- 400 mm AOR2H 40-S
- 600 mm AOR2H 60-S
- 800 mm AOR2H 80-S
- 900 mm AOR2H 90-S**
- 1000 mm AOR2H 100-S
- 1200 mm AOR2H 120-S

Set 3 | for 560 mm carcass depth



- 450 mm AOR2H 45-S1**



- 600 mm AOR2H 60-S1
- 800 mm AOR2H 80-S1
- 900 mm AOR2H 90-S1**
- 1000 mm AOR2H 100-S1
- 1200 mm AOR2H 120-S1

REAL WOOD

Oak – Segmented organisation.

An overview of the all-inclusive sets for all unit widths and finishes as well as pictures and descriptions of all available organisational elements can be found here on the Internet at:



http://download.nolte-kuechen.de/Innenorga_GB

Legend: 900 mm = unit width
Bold = illustration shown

INDIVIDUAL ELEMENTS



REAL WOOD

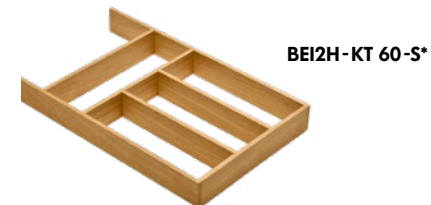
Oak – Segmented organisation.

All individual elements can be
combined with each other.



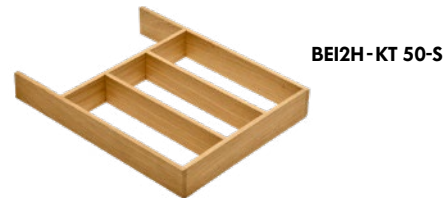
SEGMENTED CUTLERY INSERT:

for drawers and interior drawers,
from 400 mm unit width



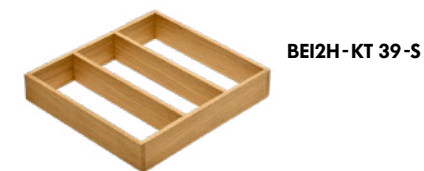
BEI2H-KT 60-S*

for 460 mm carcass depth,
from 400 mm unit width



BEI2H-KT 50-S

for 350 mm carcass depth,
from 400 mm unit width



BEI2H-KT 39-S

DEPTH DIVISION:

for pull-outs and interior pull-outs



AOR2H-LEI*

BOXES AND CROSS PARTITION:

for pull-outs and interior pull-outs | cross partition for all boxes



AOR2H-BOX 1



AOR2H-BOX 2*



AOR2H-BOX 3



AOR2H-KRZ

EXTENSION ELEMENT:

For drawers and interior drawers,
for 710 mm carcass depth,
can be combined with all-inclusive sets as well as set 1 and 2



600 mm BEI2H 60-TA
800 mm BEI2H 80-TA
900 mm BEI2H 90-TA
1000 mm BEI2H 100-TA
1200 mm BEI2H 120-TA

KNIFE BLOCK:

for drawers and interior drawers



BEI2H-MES-S*

KITCHEN ROLL HOLDER:

for drawers and interior drawers



BEI2H-FOL-S*

ALL-PURPOSE TRAYS:

for drawers and interior drawers



BEI2H-US 1



BEI2H-US 2

* For 560 mm carcass depth

MULTI-FUNCTIONAL INSERT:

for drawers and interior drawers



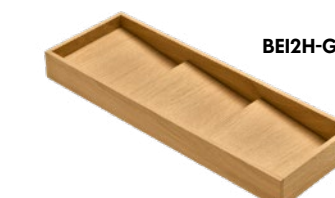
BEI2H-RAH-S*



BEI2H-KLS-S*

SPICE INSERT:

for drawers and interior drawers



BEI2H-GEW-S*



REAL WOOD

Ash – Segmented organisation.

For discerning tastes: these all-inclusive sets, sets for drawers and pull-outs as well as individual elements are available in classy black ash. Have you found what you are looking for? If you have, submit your order now.

An overview of the all-inclusive sets for all unit widths and finishes as well as pictures and descriptions of all available organisational elements can be found here on the Internet at:

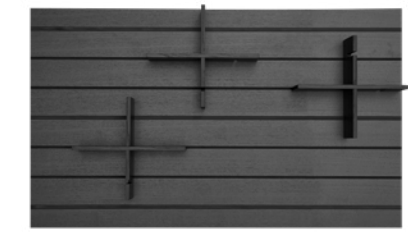


http://download.nolte-kuechen.de/Innenorga_GB

Legend: 900 mm = unit width
Bold = illustration shown

FOR THE COMPLETE UNIT:

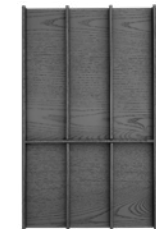
All-inclusive set Interior organisation – for base units with 1 drawer and 2 pull-outs | for 560 mm carcass depth



- 600 mm **BEI3H-SET 60**
- 800 mm **BEI3H-SET 80**
- 900 mm BEI3H-SET 90**
- 1000 mm **BEI3H-SET 100**
- 1200 mm **BEI3H-SET 120**

FOR DRAWERS AND INTERIOR DRAWERS:

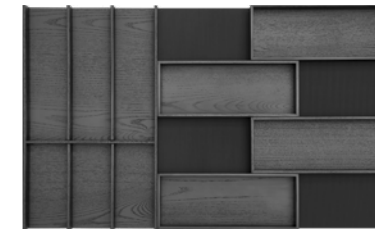
Set 1 | for 560 mm carcass depth



- 450 mm BEI3H 45-S**
- 500 mm **BEI3H 50-S**
- 600 mm **BEI3H 60-S**

Hinter einer Drehtür:

- 450 mm **BEI3H 45-DR-S**
- 500 mm **BEI3H 50-DR-S**
- 600 mm **BEI3H 60-DR-S**



- 800 mm **BEI3H 80-S**
- 900 mm BEI3H 90-S**
- 1000 mm **BEI3H 100-S**
- 1200 mm **BEI3H 120-S**

Set 2 | for 560 mm carcass depth



- 450 mm BEI3H 45-S1**
- 500 mm **BEI3H 50-S1**
- 600 mm **BEI3H 60-S1**



- 800 mm **BEI3H 80-S1**
- 900 mm BEI3H 90-S1**
- 1000 mm **BEI3H 100-S1**
- 1200 mm **BEI3H 120-S1**

FOR PULL-OUTS AND INTERIOR PULL-OUTS:

Set 3 | for 560 mm carcass depth



- 450 mm AOR3H 45-S**
- 500 mm **AOR3H 50-S**

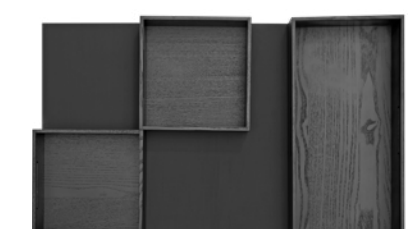


- 400 mm **AOR3H 40-S**
- 600 mm **AOR3H 60-S**
- 800 mm **AOR3H 80-S**
- 900 mm AOR3H 90-S**
- 1000 mm **AOR3H 100-S**
- 1200 mm **AOR3H 120-S**

Set 4 | for 560 mm carcass depth



- 450 mm AOR3H 45-S1**



- 600 mm **AOR3H 60-S1**
- 800 mm **AOR3H 80-S1**
- 900 mm AOR3H 90-S1**
- 1000 mm **AOR3H 100-S1**
- 1200 mm **AOR3H 120-S1**

INDIVIDUAL ELEMENTS



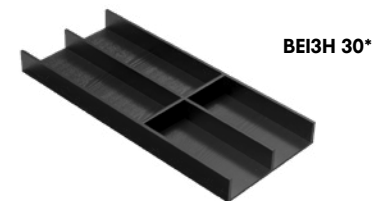
REAL WOOD

Ash – Segmented organisation.

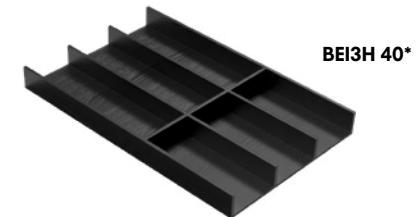
All individual elements can be
combined with each other.

SEGMENTED CUTLERY INSERT:

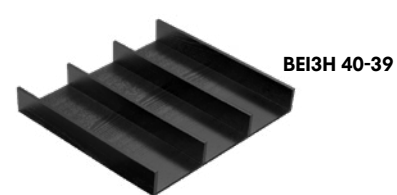
for drawers and interior drawers,
from 400 mm unit width



for 460 mm carcass depth,
from 400 mm unit width



for 350 mm carcass depth,
from 400 mm unit width



DEPTH DIVISION:

for pull-outs and interior pull-outs



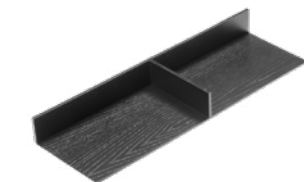
BOXES AND CROSS PARTITION:

for pull-outs and interior pull-outs | cross partition for all boxes



EXTENSION ELEMENT:

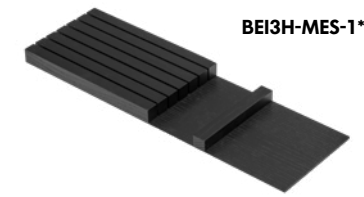
For drawers and interior drawers,
for 710 mm carcass depth,
can be combined with all-inclusive sets as well as set 1 and 2



600 mm BEI3H 60-TA
800 mm BEI3H 80-TA
900 mm BEI3H 90-TA
1000 mm BEI3H 100-TA
1200 mm BEI3H 120-TA

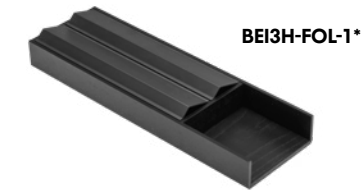
KNIFE BLOCK:

for drawers and interior drawers



KITCHEN ROLL HOLDER:

for drawers and interior drawers



SPICE INSERT SET:

for drawers and interior drawers



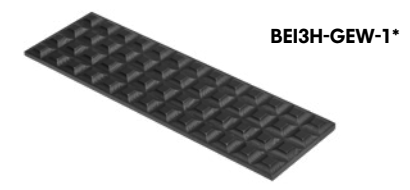
MULTI-FUNCTIONAL INSERT:

for drawers and interior drawers



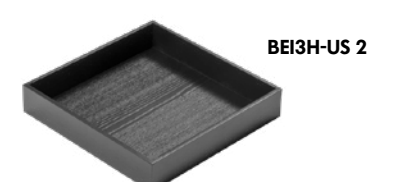
SPICE INSERT:

for drawers and interior drawers



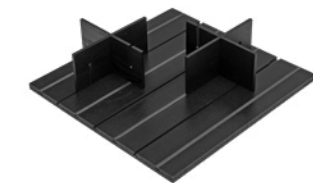
ALL-PURPOSE TRAYS:

for drawers and interior drawers

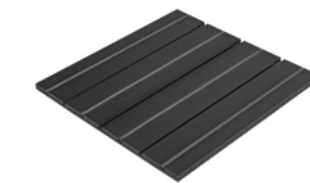


FUNCTION BASE WITH CROSS SLOTS:

for pull-outs and interior pull-outs



600 mm AOR3H 60-FB1*
800 mm AOR3H 80-FB1*
900 mm AOR3H 90-FB1*
1000 mm AOR3H 100-FB1*
1200 mm AOR3H 120-FB1*



600 mm AOR3H 60-FB*
800 mm AOR3H 80-FB*
900 mm AOR3H 90-FB*
1000 mm AOR3H 100-FB*
1200 mm AOR3H 120-FB*

FOR ADDING:

Slot-in cross partition



Non-slip strips



* For 560 mm carcass depth

NOLTE KÜCHEN
INTERIOR ORGANISATION

Everything organised.



Nolte Küchen interior organisers not only keep everything neat and tidy, you can also use them to suit your specific needs and enjoy the practical value of each element in everyday kitchen routine. You will come to appreciate them.

Simply talk to your kitchen retailer about the many interior organisation options for your kitchen – he or she will be pleased to help to make the right choice for your kitchen interior.



The kitchen is the room of rooms.
We probably *live* more,
and more *intensively*,
here than anywhere else in the home.
It is the place where
we meet, where we encounter others.
As family or friends.
As a couple.
We *cook, eat* and *enjoy* ourselves
in the kitchen. And sometimes we have
all the time in the world as we do so.
We argue. And *make up again*.
We read, write, send emails, post messages.
And maybe philosophise a little.
And – quite secretly – the kitchen sets
the rhythm of our day.
Good morning. Then midday. Then evening.
And sometimes night ...
Which is *why we love* the kitchen.

Living in the kitchen. nolte

nolte[®]
KÜCHEN

Nolte Küchen GmbH & Co. KG | Anni-Nolte-Straße 4 | 32584 Löhne | www.nolte-kuechen.com

VF-ORGA-GB

Subject to technical change without notice. Colour shades in this catalogue may sometimes vary slightly from original colours for printing and photographic reasons.

